

Medicare Makes a Change, Here's what **YOU** change:

Medicare has made a contract change that will go into effect at 3pm on 6/30/2016. After that time, they will give the new contractor a few days to make the change over- WHICH MEANS, *you need to get everything transmitted by 3pm that day.* You will be able to resume transmission on July 5th, 2016 to the new contractor.

If you transmit your Medicare claims through Capario, Zirmed, or any host OTHER THAN Ability:

How to make the change in HDMS:

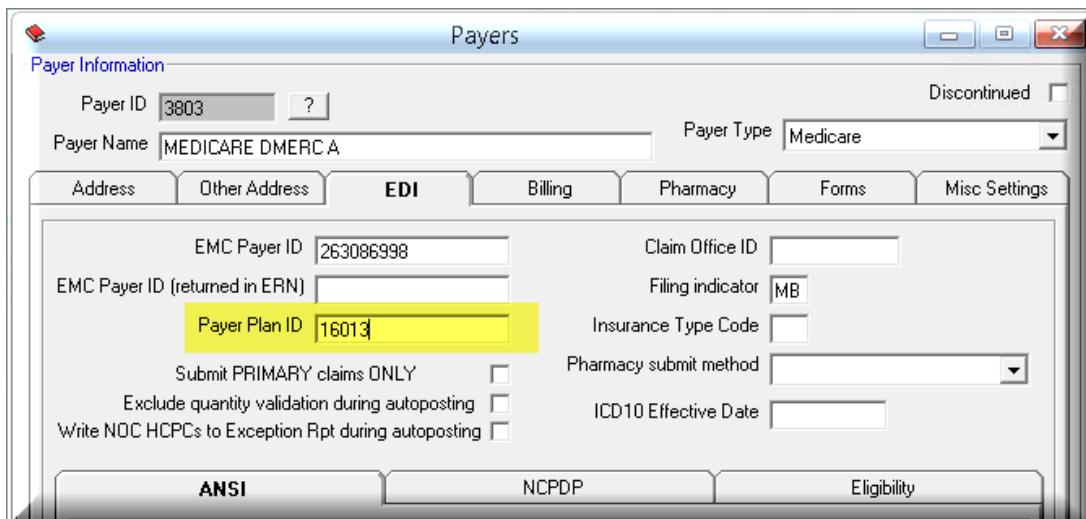
Step 1: leave settings alone in EDI Host Table and Payer Table until after transmitting is done on 6/30/16

Step 2: navigate into Medicare Region B in your PAYER TABLE, on the EDI Tab change the "Payer Plan ID" to 17013 (from 17003), save changes.

Step 3: navigate into Medicare Region A in your PAYER TABLE, on the EDI tab change the "Payer Plan ID" to 16013 (from 16003)

Step 4: although all claims to Medicare are electronic, you may choose to store the new address in your payer table entry. New Contractor:

CGS Administrators
Two Vantage Way
Nashville, TN 37228



The screenshot shows a software window titled "Payers" with a "Payer Information" tab. The form contains the following fields and values:

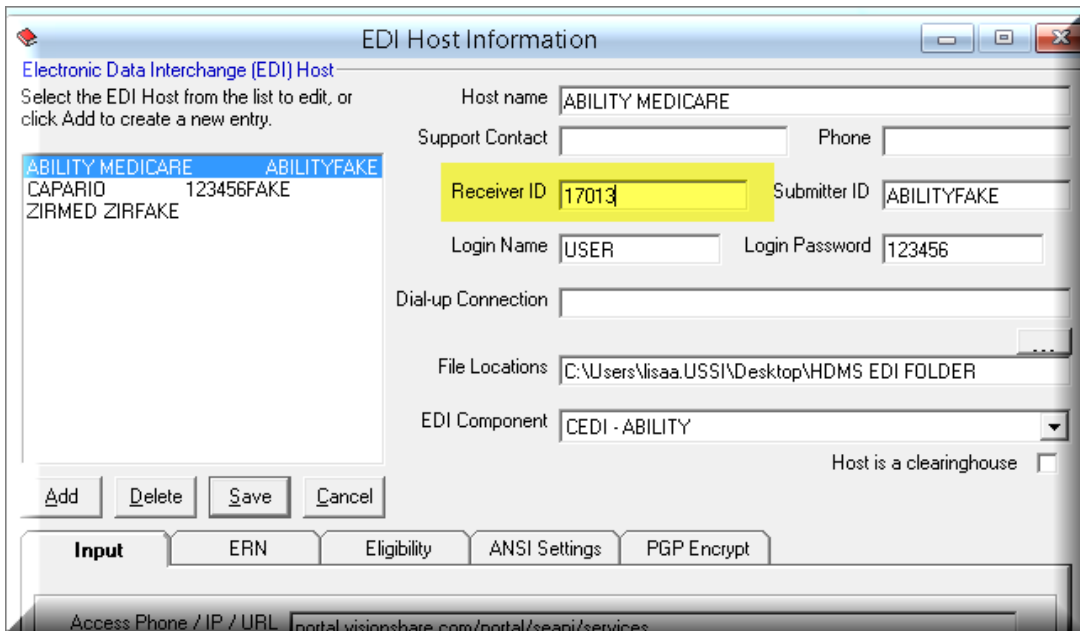
- Payer ID: 3803
- Payer Name: MEDICARE DMERCA
- Payer Type: Medicare
- Discontinued:
- Address, Other Address, EDI, Billing, Pharmacy, Forms, Misc Settings (tabs)
- EMC Payer ID: 263086998
- EMC Payer ID (returned in ERN):
- Payer Plan ID: 16013** (highlighted in yellow)
- Claim Office ID:
- Filing indicator: MB
- Insurance Type Code:
- Pharmacy submit method:
- ICD10 Effective Date:
- Submit PRIMARY claims ONLY:
- Exclude quantity validation during autoposting:
- Write NOC HCPCs to Exception Rpt during autoposting:
- ANSI, NCPDP, Eligibility (bottom tabs)

If you transmit your Medicare claims through Ability:

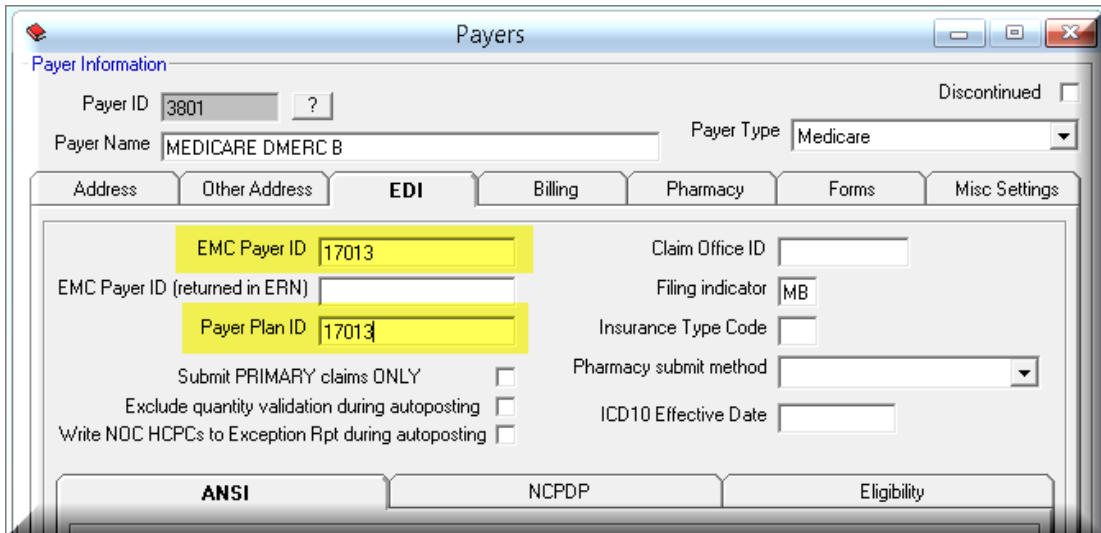
How to make the change in HDMS:

Step 1: leave settings alone in EDI Host Table and Payer Table until after transmitting is done on 6/30/16

Step 2: navigate to EDI Menu, select EDI Host Table. In only your Ability Host entry, change the RECEIVER ID from 17003 to 17013.



Step 3: navigate into Medicare Region B in your PAYER TABLE, on the EDI Tab change the EMC PAYER ID to 17013 and the PAYER PLAN ID to 17013 (from 17003), save changes.



Step 4: navigate into Medicare Region A in your PAYER TABLE, on the EDI tab change the EMC PAYER ID to **17013** and the PAYER PLAN ID to **16013** (from 16003)

Payers

Payer Information

Payer ID: 3803 ? Discontinued

Payer Name: MEDICARE DMERCA Payer Type: Medicare

Address | Other Address | **EDI** | Billing | Pharmacy | Forms | Misc Settings

EMC Payer ID: 17013 Claim Office ID:

EMC Payer ID (returned in ERN): Filing indicator: MB

Payer Plan ID: 16013 Insurance Type Code:

Submit PRIMARY claims ONLY Pharmacy submit method:

Exclude quantity validation during autoposting ICD10 Effective Date:

Write NOC HCPCS to Exception Rpt during autoposting

ANSI | NCPDP | Eligibility

Step 5: although all claims to Medicare are electronic, you may choose to store the new address in your payer table entry. New Contractor:

CGS Administrators
 Two Vantage Way
 Nashville, TN 37228